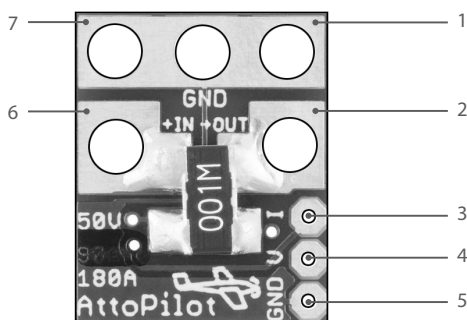


ELECTRONIC CONNECTION

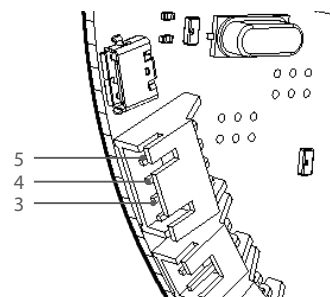
Attopilot Voltage and Current Sensor Connection

Voltage and Current Sensor Diagram

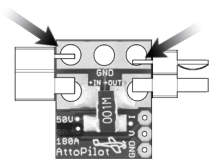


1. (-) ESC Conn.
2. (+) ESC Conn.
3. Electronic Board Conn. - Current
4. Electronic Board Conn. - Voltage
5. Electronic Board Conn. - Ground
6. (+) Battery Conn.
7. (-) Battery Conn.

Voltage and Current Board Diagram



1 Solder Connector

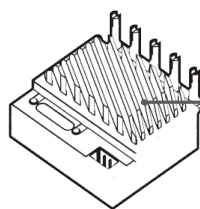


Different connectors and wires can be soldered on the sensor

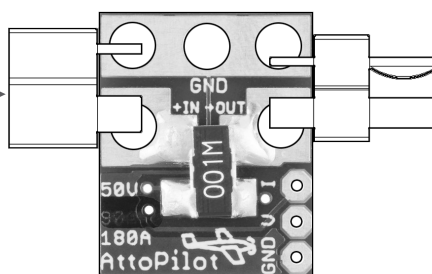
2 Connect Transmitter, Receiver, and ESC to the Motor

Please refer to the ESC, Transmitter, and Receiver manufacturers' instruction manual.

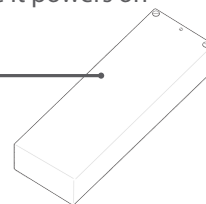
3 Connect Sensor



3.1. Connect Battery port of ESC to the Sensor

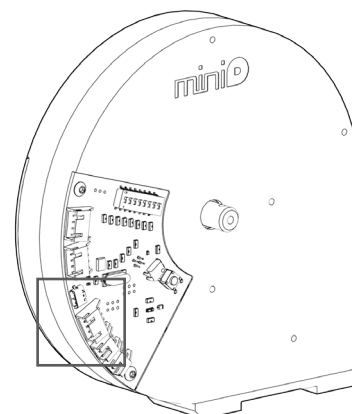
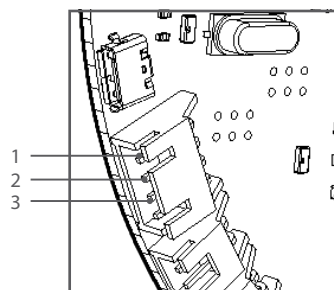
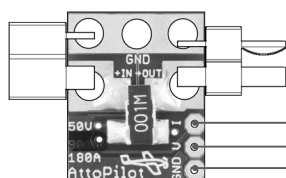


3.3. Turn ON the ESC to make sure it powers on



3.2. Connect Battery to Sensor

4 Connect Sensor to Electronic Board



Use provided wire to connect sensor into the electronic board.